



# GAT MONTHLY MEMBERSHIP PROGRESS REPORT

Results as of: 3/31/2022

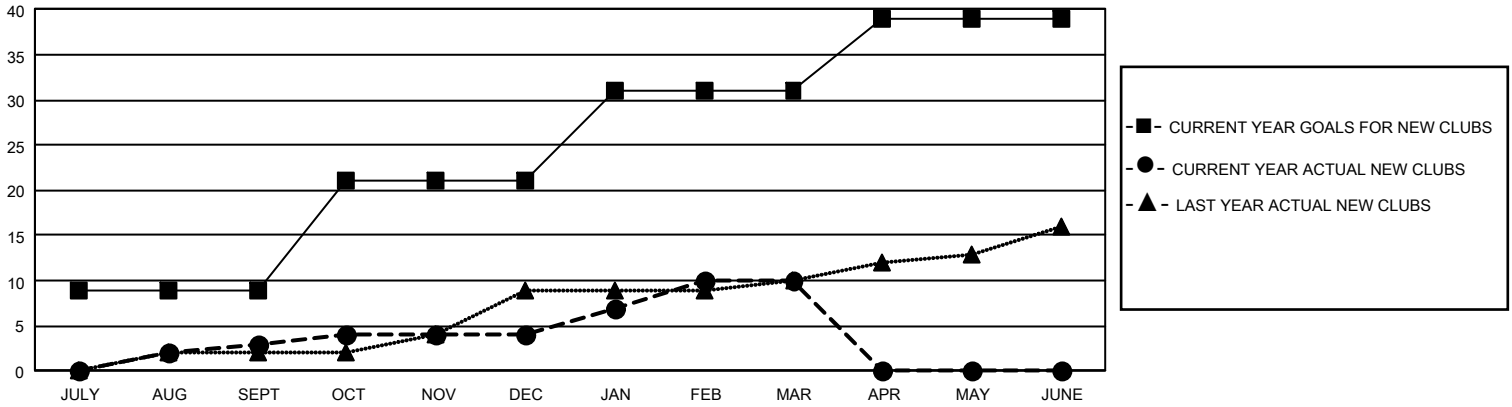
## GMT Constitutional Area 1, Group M

REPORT DOES NOT INCLUDE CLUBS IN UNDISTRICTED AREAS.

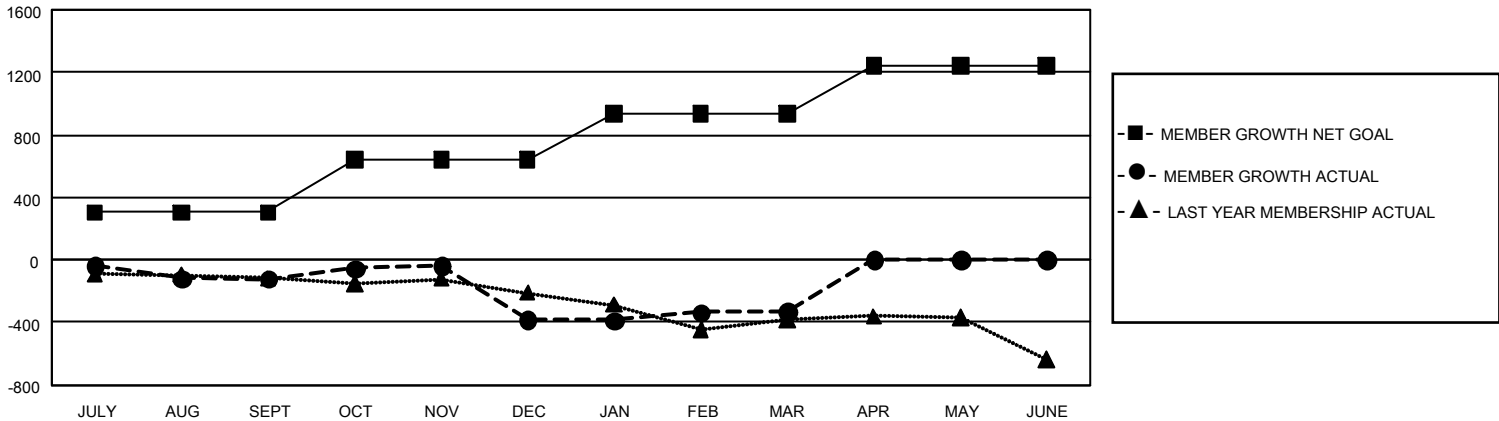
| Clubs                 |               |           |               |
|-----------------------|---------------|-----------|---------------|
| RESULTS FOR 2021-2022 |               |           |               |
| QUARTER               | NEW CLUB GOAL | NEW CLUBS | DROPPED CLUBS |
| JULY/AUG/SEPT         | 27            | 3         | 11            |
| OCT/NOV/DEC           | 36            | 1         | 12            |
| JAN/FEB/MAR           | 30            | 6         | 5             |
| APR/MAY/JUNE          | 24            | 0         | 0             |

| Members               |                        |                      |  |
|-----------------------|------------------------|----------------------|--|
| RESULTS FOR 2021-2022 |                        |                      |  |
| QUARTER               | MEMBER GROWTH NET GOAL | MEMBER GROWTH ACTUAL | DROPPED MEMBERS ACTUAL (including transfers) |
| JULY/AUG/SEPT         | 306                    | 673                  | 704  |
| OCT/NOV/DEC           | 335                    | 621                  | 776  |
| JAN/FEB/MAR           | 292                    | 814                  | 657  |
| APR/MAY/JUNE          | 307                    | 0                    | 0  |

GOALS AND ACTUAL NEW CLUBS CUMULATIVE



GOALS AND ACTUAL MEMBERS CUMULATIVE



|   |  |   |                                       |
|---|--|---|---------------------------------------|
| <b>DROPPED CLUBS: 28</b>  | 428 CLUBS OF 816 ADDED 1 OR MORE NEW MEMBERS | <b><u>GENDER DISTRIBUTION</u></b>   |                                       |
|   |  | MALE 10,671 (61.88%)<br>FEMALE 6,571 (38.11%)<br>NON BINARY 0 (0.00%)<br>PREFER NOT TO ANSWER 2 (0.01%) |                                       |
| <b><u>DROPPED MEMBERS</u></b>   |  | <a href="#">CLICK HERE FOR CUMULATIVE MEMBERSHIP DATA</a>   | TOTAL FAMILY UNIT MEMBERS 3,664       |
| DECEASED 281<br>CLUB CANCELLED 302<br>OTHER 1,554<br><b>TOTAL 2,137</b> |  |   | FAMILY MEMBERS PAYING HALF DUES 1,879 |